

# Parking and Transportation

## Depot Parking Lot

There are paid parking lots on-site at The Depot for attendees to use, including a surface parking lot and a two-leveled parking garage. Parking on-site for the event will be a flat event parking rate of \$15, regardless of where you park. All the parking areas are connected to The Depot, whether through entryways off the sidewalk or by elevator from the parking garages. The surface lot and parking garages all have designated accessible parking spaces.

The parking garages have more spaces than the surface lot, which can fill up quickly. To access the on-site parking, you must enter from Fifth Avenue South, on the east side of the building, and drive through the gates. The parking rate per vehicle is \$15 for the event and will be collected upon arrival at the kiosk.

## Places to park nearby

- Paid street parking is available along Fifth Avenue South and Second Street South outside The Depot. There are plenty of other paid street parking spaces throughout downtown Minneapolis, though availability may be limited. We recommend using the 'MPLS Parking' app to search for spots that may be available.
- There are parking ramps near The Depot. Here are some that are within a few blocks:

Portland Avenue Ramp: 220 Portland Ave S, Minneapolis, MN

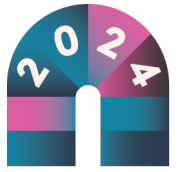
Gateway Parking Ramp: 400 S 3<sup>rd</sup> St, Minneapolis, MN

Jerry Haaf Memorial Ramp: 424 4<sup>th</sup> St, Minneapolis, MN

Courthouse Municipal Ramp: 2277, 333 3<sup>rd</sup> Ave S, Minneapolis, MN

## Metro Mobility Drop-Off

If you are planning to take Metro Mobility to the event, the best drop off spot is inside the parking lot at the Renaissance main entrance off of 3<sup>rd</sup> Avenue South. When you enter in the building from this entrance, you will want to head straight back through the lobby and turn right down the hallway past the Milwaukee Road restaurant and bar. From there, follow the signs that point to the Lifeworks Annual Celebration.



## Nearby bus and light-rail routes

Taking the bus or using the light-rail are a great way to get around Minneapolis! Below is some useful information for planning your trip if you are taking public transportation:

- The Depot is not located along the Blue or Green Line, but there are light rail stations in downtown Minneapolis. Government Plaza station is about three blocks away (0.3 miles) from The Depot, and the U.S. Bank Stadium station is roughly five blocks away (0.8 miles).
- The closest Metro Transit bus stop is at the corner of Fifth Avenue South and Washington Avenue South, just across from The Depot.

## Taxi and ride-sharing options

If you don't want to drive or have to find parking at the event, we recommend booking a taxi or using a ride sharing service. Some options are listed below:

- Lyft: <https://www.lyft.com/>
- Uber: <https://www.uber.com/>
- Blue and White Taxi: <https://blueandwhitetaxi.com/>
- Yellow Taxi Cab: <https://www.yellowtaxicabmn.com/>